

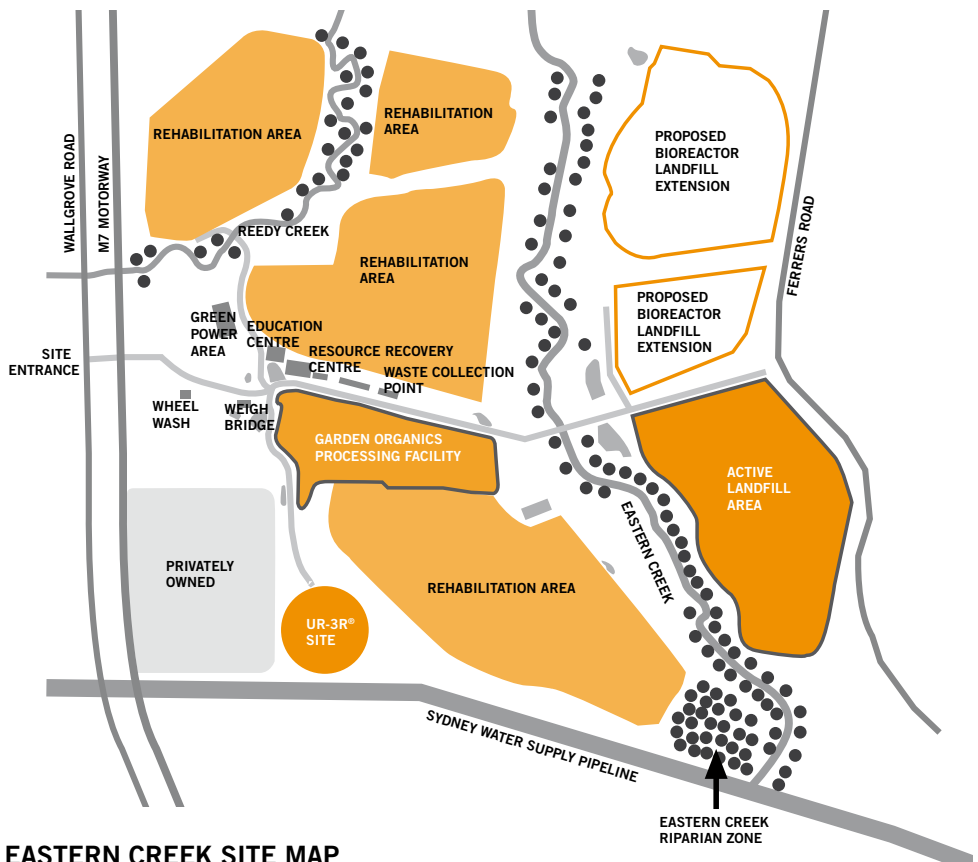
**WHAT HAPPENS AT THE
EASTERN CREEK
WASTE AND
RECYCLING
CENTRE**

WSN Environmental Solutions is a State Owned Corporation with over 30 years' experience providing reliable and responsible environmental services to the greater Sydney area and beyond.

We operate Australia's largest and most advanced waste management network – seven Resource Recovery Centres, two Materials Recycling Facilities, four responsibly managed landfills and Sydney's first Alternative Waste Technology (AWT) facility.

The Eastern Creek Waste and Recycling Centre spans 154 hectares and over **161,000 cars and trucks** use the Centre each year. The site was opened in 1984 and the services available include:

- ▶ Resource Recovery Centre
- ▶ Waste Collection Point
- ▶ Garden Organics Processing Facility
- ▶ Highly Engineered Bioreactor Landfill
- ▶ Green Energy Production
- ▶ Alternative Waste Technology (AWT)
- ▶ Education Centre



EASTERN CREEK SITE MAP

SMALL VEHICLE DROP-OFF AREA

This includes the Resource Recovery Centre and Waste Collection Point. Materials such as bricks, concrete, roof tiles and terracotta pipes are also accepted in this area and processed for reuse on site.

Resource Recovery Centre

This is where householders and small businesses drop off their:

- ▶ Recyclables; eg. plastic containers, paper, cardboard, cans
- ▶ Scrap metal; eg. washing machines, stoves, car tyres with rims
- ▶ Hazardous items; eg. paint, vehicle batteries, engine oil, gas cylinders
- ▶ Reusable items eg. bicycles
- ▶ Milk crates
- ▶ Old clothing



Items received at the Resource Recovery Centre are reused, recycled or disposed of responsibly. For example:

Newspapers

Old newspapers are recycled to make new newspapers



Plastic Containers

Old PET bottles are turned into new products such as soft drink bottles, detergent bottles, fleecy jackets or carpet fibres



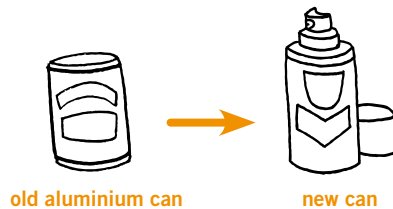
Steel

Old steel cans can be turned into just about any kind of steel product such as road signs, appliances and car parts



Aluminium

Old aluminium cans can be made into a range of products such as new cans and car parts



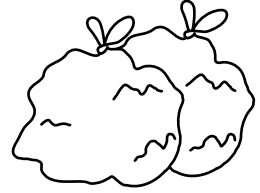
Hazardous items

Hazardous items are sent to companies for recycling and reuse. For example, paint and engine oil can be recycled for use in the alternative fuel industry and gas cylinders are recovered for their metal.

The Centre also has a Revolve Shop where reusable items are sold on a donations basis. The monies received are donated to charity.

Waste Collection Point

For items that cannot be recycled or reused there are collection bins for general household waste. The waste in these collection bins is sent to landfill.



LANDFILL

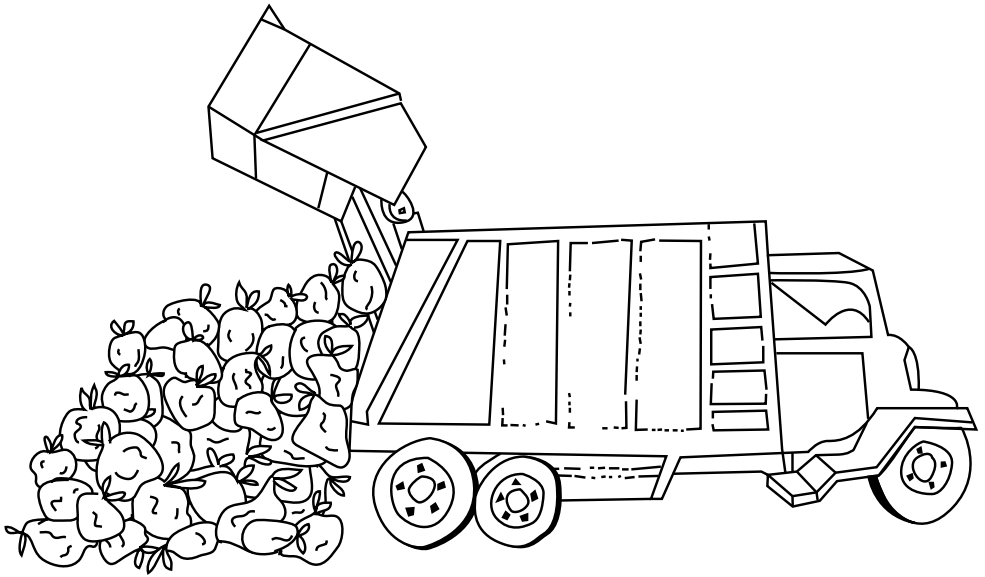
This is where large trucks unload the general household waste (we call this mixed solid waste) that is collected from the kerbside to be buried.

Local councils and commercial waste contractors use the landfill.

The Eastern Creek bioreactor landfill receives approximately **500,000 tonnes of waste each year. This is equivalent to**

the weight of 9 Sydney Harbour Bridges!

Long term care through ongoing monitoring of closed areas of the landfill are part of WSN's environment protection and rehabilitation program. Filled areas of the landfill have been revegetated with local native plants from the Cumberland Plain Woodland area.

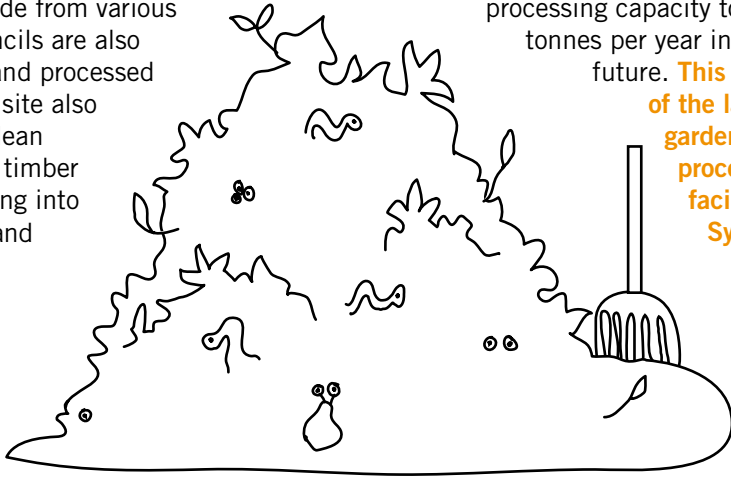


GARDEN ORGANICS PROCESSING FACILITY

This is where householders and small businesses unload their garden organics to be processed into composts, mulches and other soil conditioning products. Garden organics collected from the kerbside from various local councils are also received and processed here. The site also accepts clean untreated timber for recycling into mulches and biofuels.

Up to **50,000 tonnes** of garden organics per year are processed at Eastern Creek by Australian Native Landscapes (ANL) under contract to WSN Environmental Solutions. We plan to increase the processing capacity to 80,000 tonnes per year in the future.

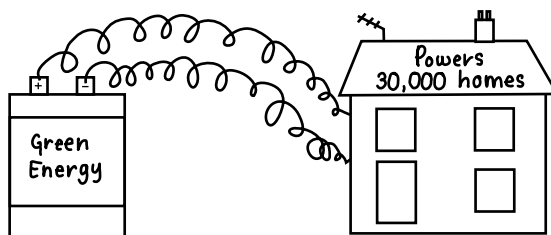
This is one of the largest garden organics processing facilities in Sydney.



GREEN ENERGY PRODUCTION

Biogas is the gas generated from organic waste breaking down in the landfill. It is collected by a series of pipes and converted into electricity. WSN Environmental Solutions pioneered the generation of green electricity from

waste in NSW in 1994. **On this site the power generators produce enough renewable electricity to power up to 6,000 homes. Across our network we produce enough renewable energy to power up to 30,000 homes.**



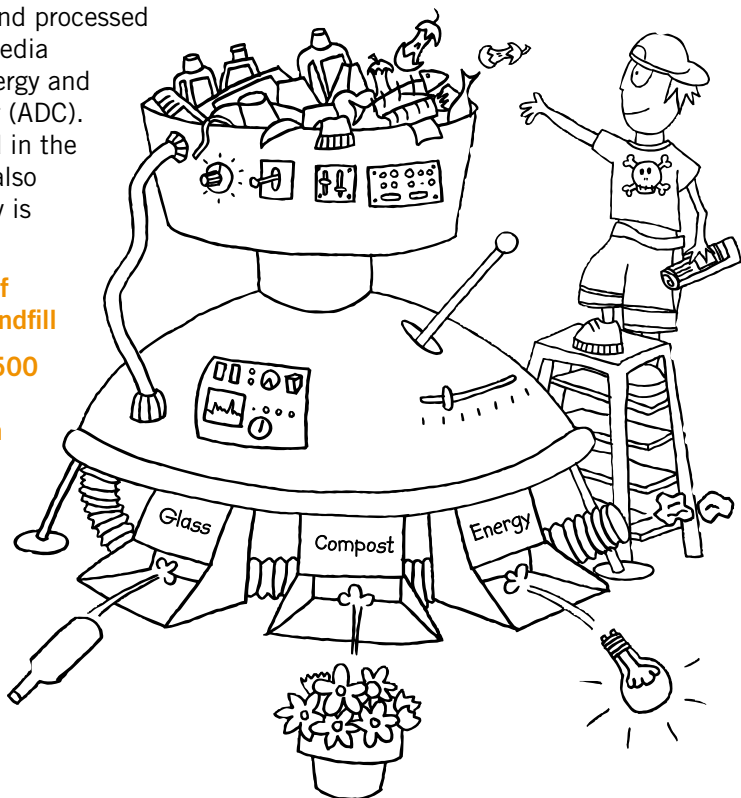
ALTERNATIVE WASTE TECHNOLOGY – THE EASTERN CREEK UR-3R FACILITY

WSN Environmental Solutions is leading the shift to treating waste as a valuable resource. Our commitment to this role has led to the commissioning of Sydney's first Alternative Waste Technology facility for household waste at Eastern Creek. The facility is a partnership between WSN Environmental Solutions and Global Renewables.

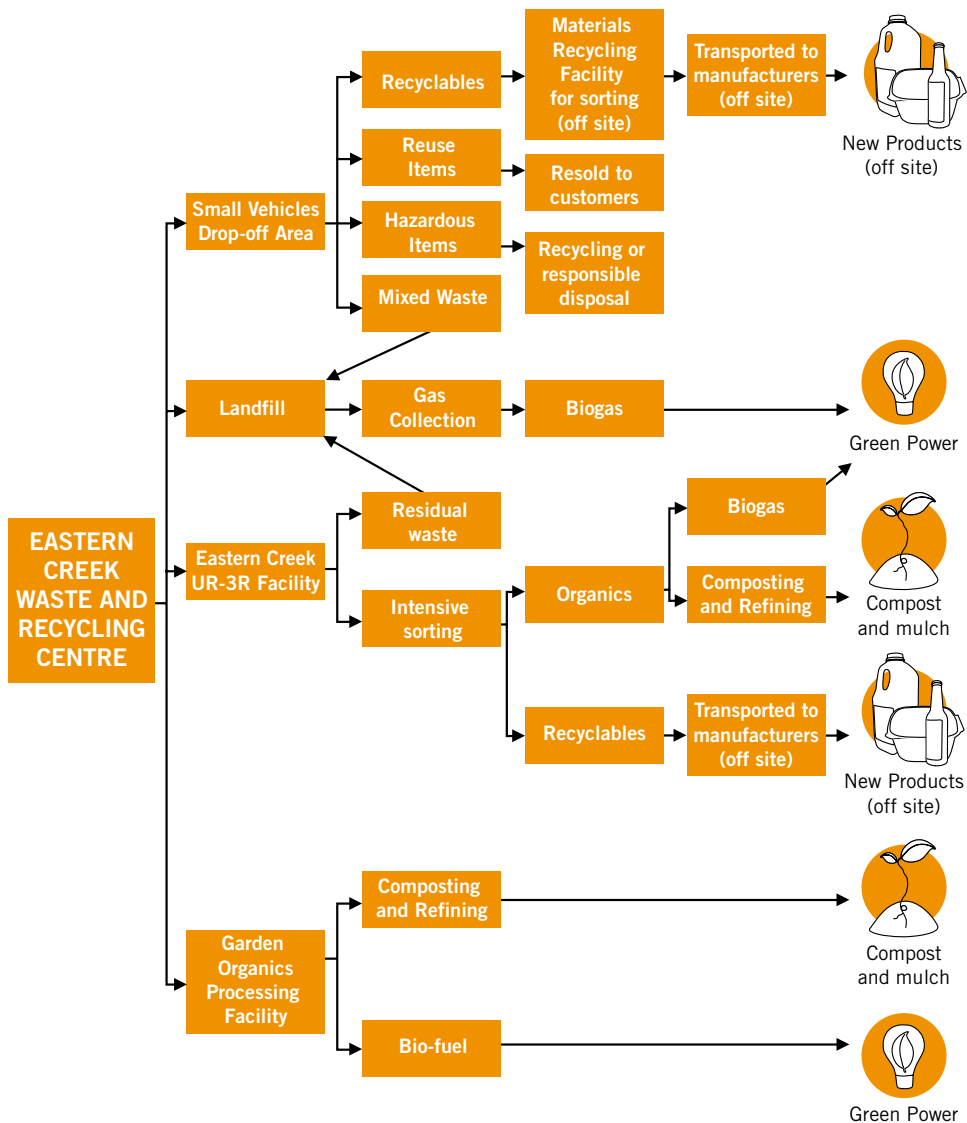
The Eastern Creek UR-3R Facility is where mixed solid waste from some councils is received and processed into organic growth media (OGM), renewable energy and alternative daily cover (ADC). Any recyclables found in the household waste are also recovered. The facility is designed to:

- ▶ Divert up to **80% of waste away from landfill**
- ▶ Produce up to **23,500 tonnes of compost** each year – enough to fill around **13 Olympic swimming pools**

- ▶ Capture up to **100% of biogas** produced
- ▶ Recover an extra **23,000 tonnes of recyclable materials** each year – equivalent to the weight of **4,600 adult elephants**
- ▶ Produce enough green electricity to power up to **2,250 homes**
- ▶ Reduce greenhouse gas emissions equivalent to taking up to **50,000 cars off the road**



OVERVIEW OF WHAT HAPPENS AT THIS SITE



For more information on garden organics, landfills and alternative waste technologies please see our Easy Guide booklets, which are available on our website: www.wsn.com.au

